

Pat O'Neill -- The Decay of Fiction

Entryway



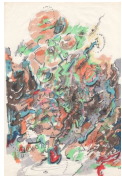
Sketches on Manifold Paper 10
1980
Colored pencil, watercolor, and collage on paper, framed
13 x 8 inches, 33.02 x 20.32 centimeters
\$6,500.00



One of Hokusai's
1975
Collage on paper, framed
10.75 x 8.25 inches, 27.31 x 20.96 centimeters
\$6,500.00



The Everglades Club
1974
Collage on paper, framed
10.75 x 8.25 inches, 27.31 x 20.96 centimeters
\$6,500.00



Sketches on Manifold Paper 5
1980
Ink and felt pen on paper, framed
13 x 8 inches, 33.02 x 20.32 centimeters
\$6,500.00



Sketches on Manifold Paper 25
1980
Ink and felt pen on paper, framed
13 x 8 inches, 33.02 x 20.32 centimeters
\$6,500.00



Untitled (Collage 1)
1965
Paper collage on illustration board, framed
13.5 x 10.25 inches, 34.29 x 26.04 centimeters
19 x 16.25 inches, 48.26 x 41.28 centimeters framed
\$8,500.00



EK 5369 #5
2018
Print film mounted in glass, straight Douglas Fir wood frame
19 x 16 inches, 48.26 x 40.64 centimeters
\$6,500.00

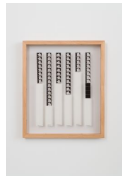
Pat O'Neill -- The Decay of Fiction



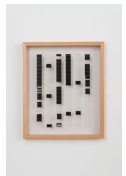
EK 5369 #7
2018
Print film mounted in glass, straight Douglas Fir wood frame
19 x 16 inches, 48.26 x 40.64 centimeters
\$6,500.00



EK 5369 #2
2018
Print film mounted in glass, straight Douglas Fir wood frame
19 x 16 inches, 48.26 x 40.64 centimeters
\$6,500.00

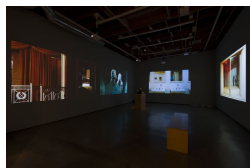


EK 5369 #6
2018
Print film mounted in glass, straight Douglas Fir wood frame
\$6,500.00



EK 5369 #1
2018
Print film mounted in glass, straight Douglas Fir wood frame
19 x 16 inches, 48.26 x 40.64 centimeters
\$6,500.00

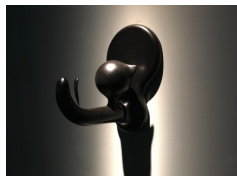
Gallery



The Decay of Fiction
2002
1-channel 35mm and 35mm transferred to digital; 5-channel digital edit 2018
6 + 2AP
Sound design: George Lockwood; TRT: 11 minutes, 30 seconds
\$30,000.00



L'il Neverbetter
1969
Polyester laminate, wood, lacquer
18.5 x 32 x 25 inches, 46.99 x 81.28 x 63.5 centimeters
\$30,000.00



Black Wall Kitty
1964
Painted metal
11 x 7 x 9 inches, 27.94 x 17.78 x 22.86 centimeters
\$25,000.00